



孕龍科技股份有限公司
Zeroplus Technology Co., Ltd.

SPECIFICATION

MODEL:B10003-LAP-DS1302-M

PART NO : _____

VERSION : V1.01

Approver		Check	Design
GM	PM		

Customer Confirm

* Please fax the file to
Zeroplus Technology
after signing.

2F, NO.123, Jian Ba Rd,
Chung Ho City, Taipei Hsian, R.O.C.

Tel:+886-2-66202225
Fax:+886-2-22234362



Content

1	Software Register.....	3
2	User Interface.....	6
3	Operating Instructions	9

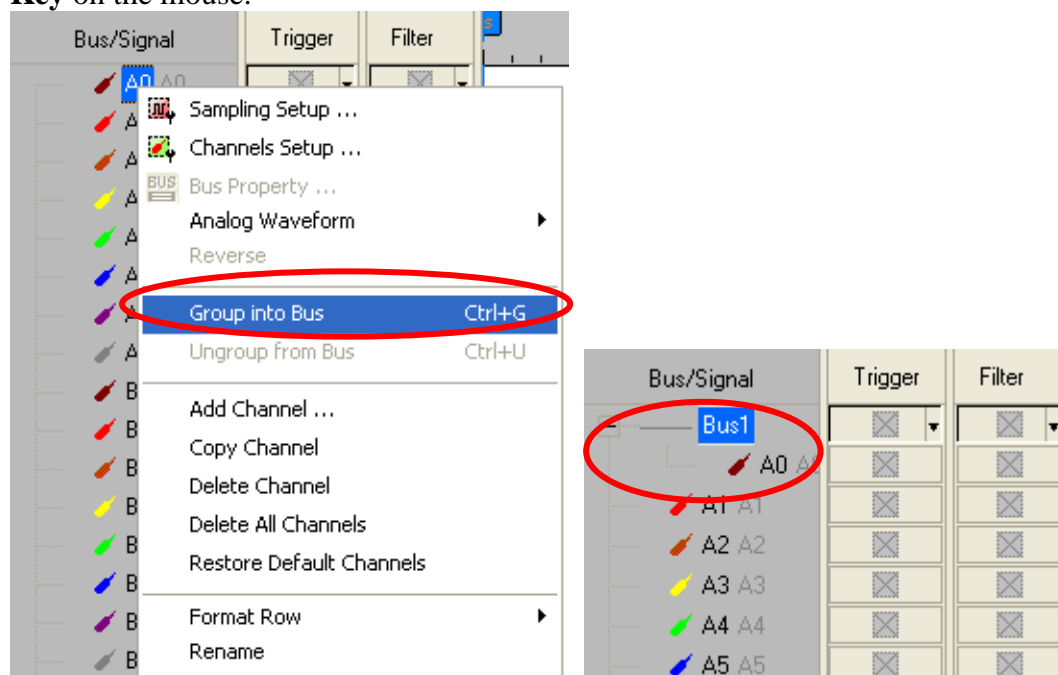


1 Software Register

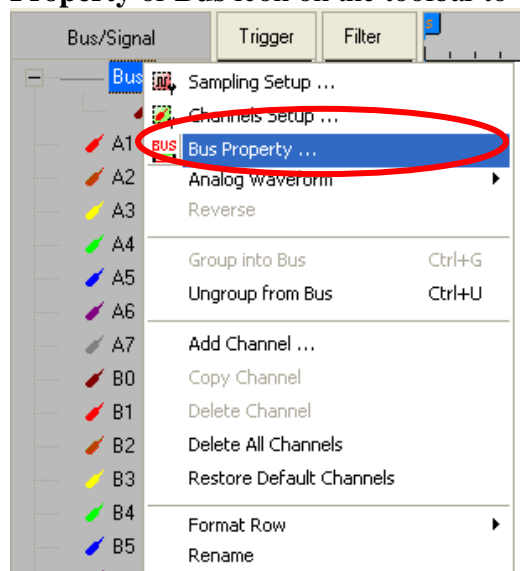
Please register the software as the following steps:

- ※ Remark1: The registration steps for all protocol analyzers are the same; you can complete the registration by following procedures. Following is an example on how to register the Protocol Analyzer BUS.
- ※ Remark2: We won't have additional notice for you, when there is any modification of the module specification. If there is some unconformity caused by the module version upgrade, users should take the module software as the standard.

STEP 1. Open the Logic Analyzer and group the unanalyzed channels into **Bus1** by pressing the **Right Key** on the mouse.

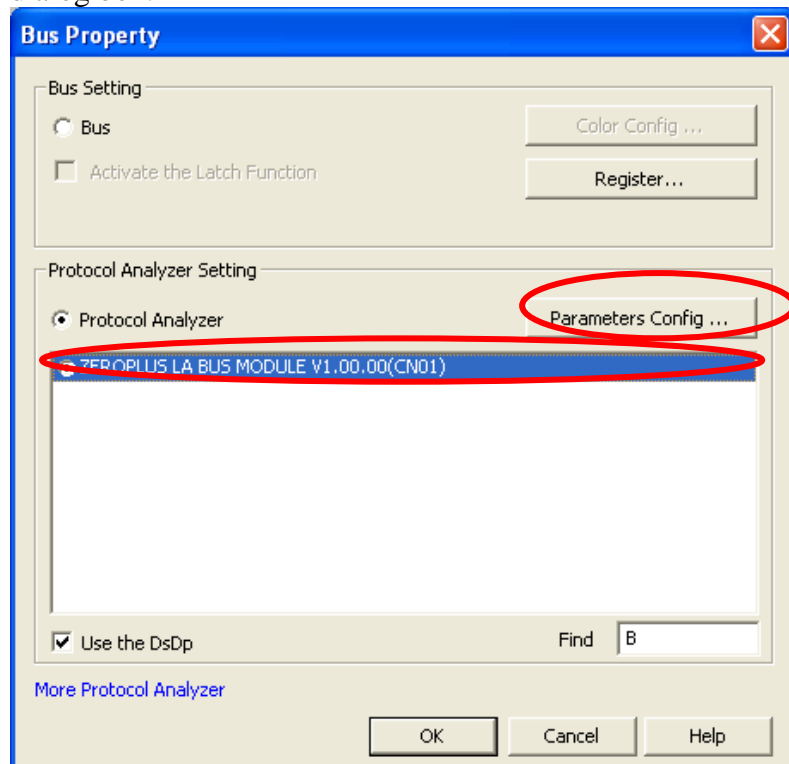


STEP 2. Select **Bus1**, and press **Right Key** on the mouse to list the menu, then press **Bus Property** or **Bus** icon on the toolbar to open **Bus Property** dialog box.

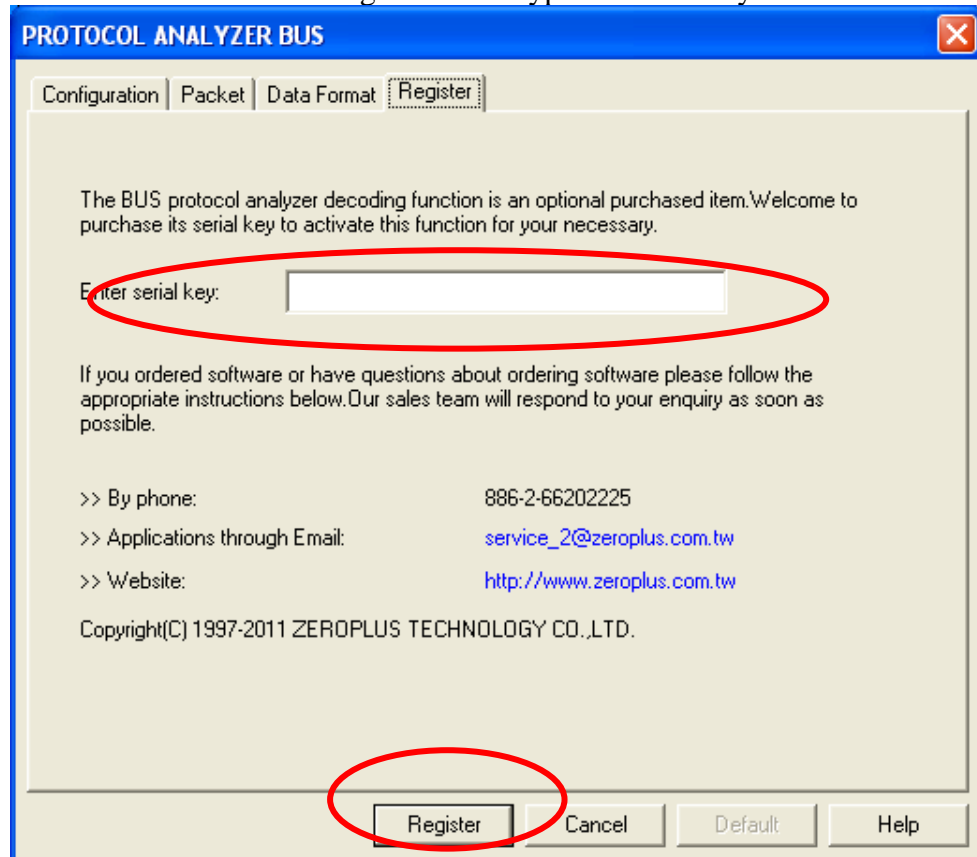




STEP 3. Select Protocol Analyzer, and then choose **ZEROPLUS LA BUS MODULE V1.00.00(CN01)**. Next click **Parameters Configuration** to open the **PROTOCOL ANALYZER BUS** dialog box.

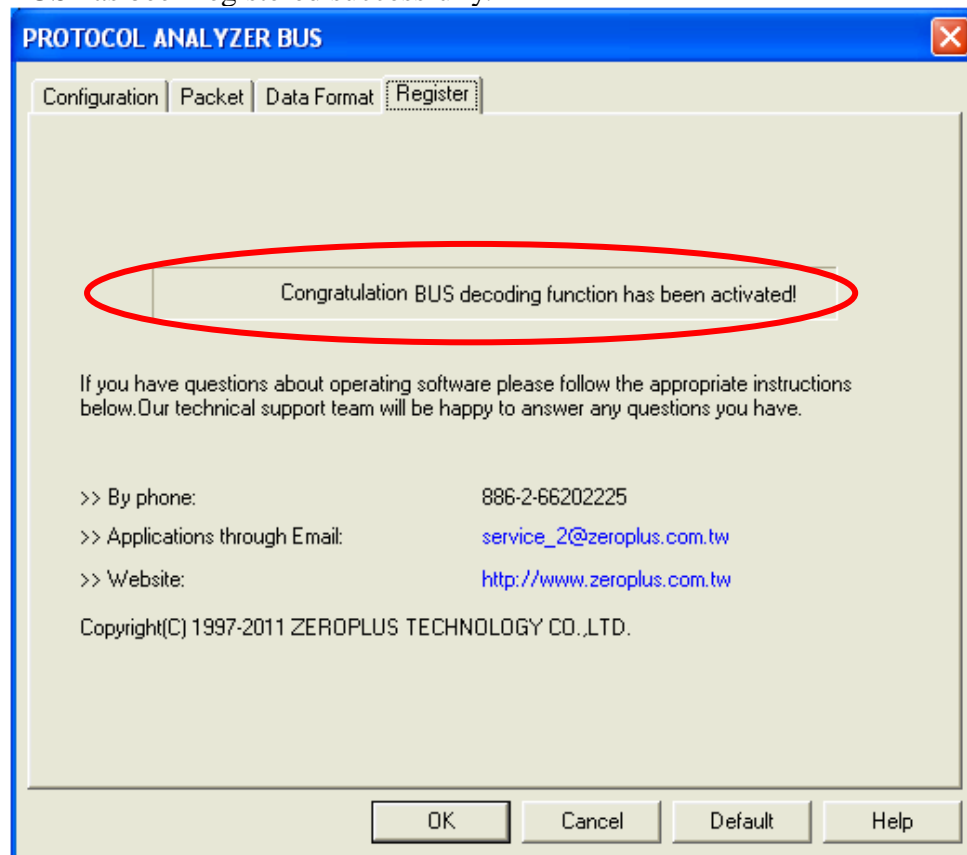


STEP 4. Press the Register tab to type the serial key number of BUS. Then, press **Register**.





STEP 5. After pressing the Register button, the following dialog box will appear; it denotes that the BUS has been registered successfully.

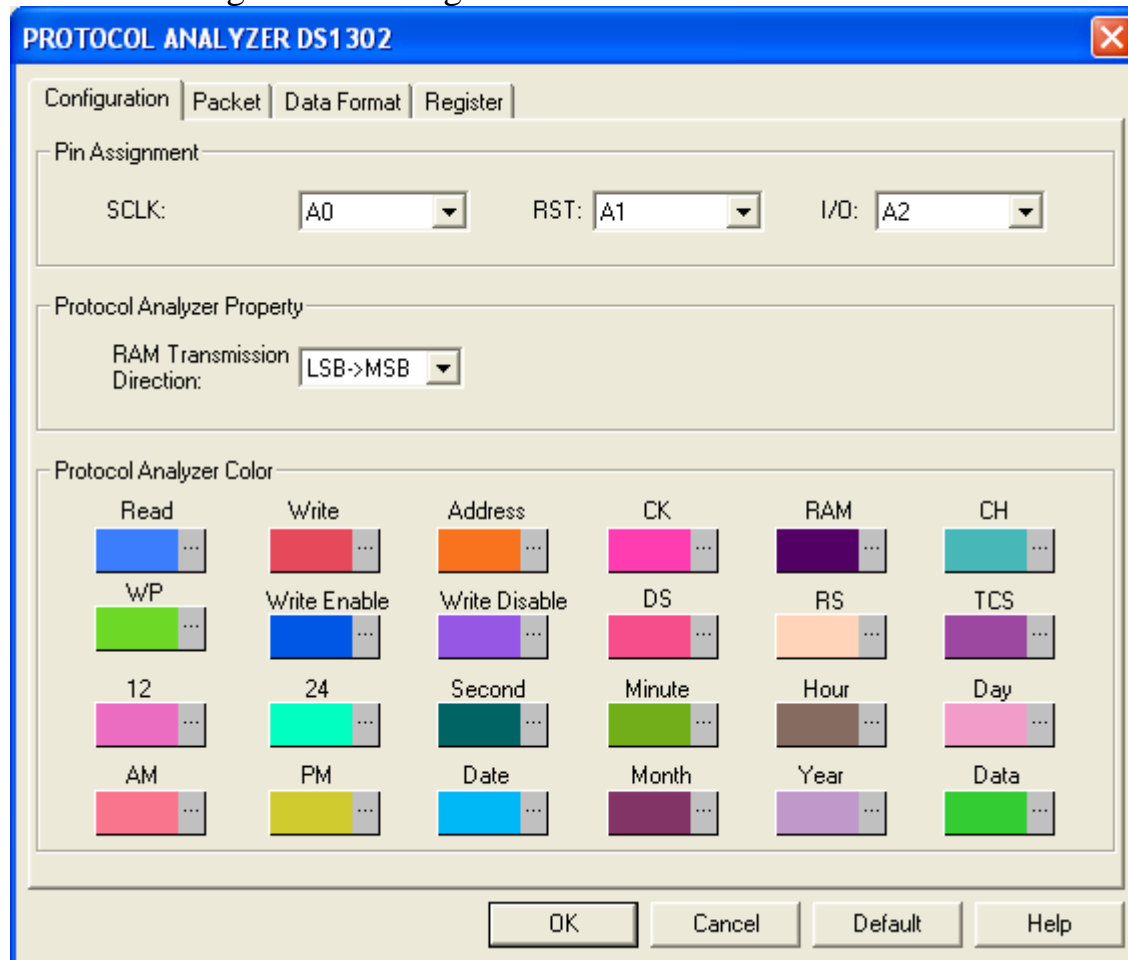




2 User Interface

In the configuration, please refer to below images to select options of setting **DS1302** module.

DS1302 Configuration Dialog Box



Pin Assignment:

Protocol Analyzer DS1302 needs three channels to do the relative decoding.

SCLK: It is the Signal Clock channel.

RST: It is the Reset channel.

I/O: It is the Data Input/Output channel.

Protocol Analyzer Property:

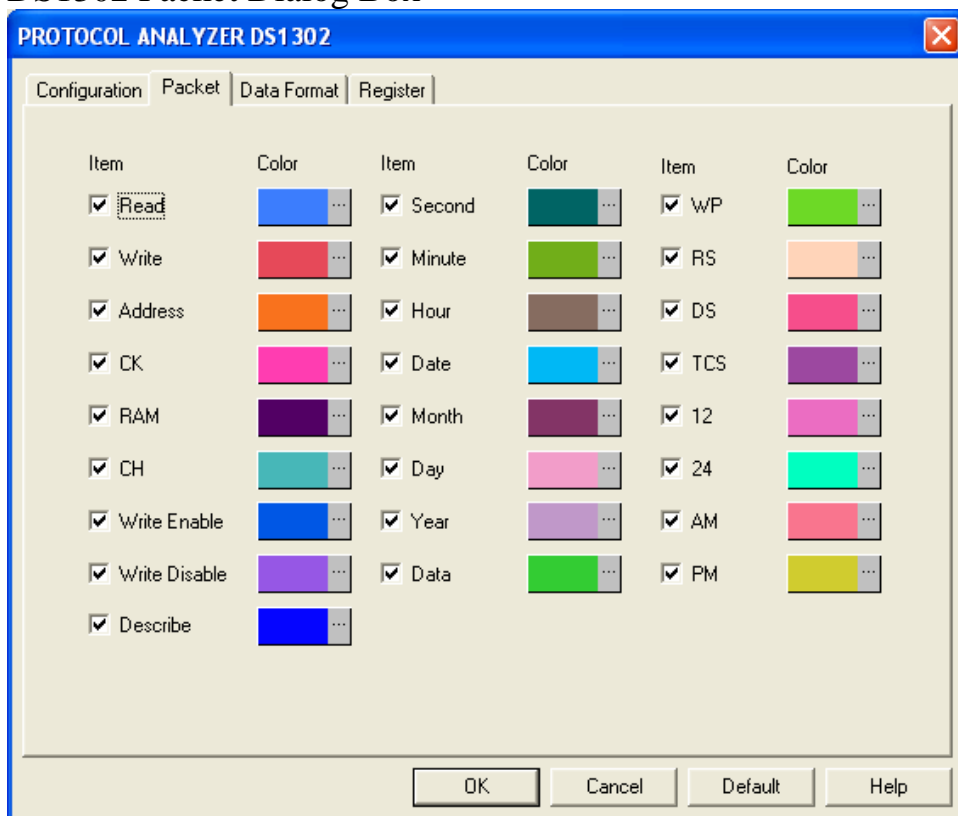
RAM Transmission Direction: There are two options, LSB->MSB and MSB->LSB, for users to select, the default is LSB->MSB.

Protocol Analyzer Color:

The protocol analyzer colors can be varied by users.

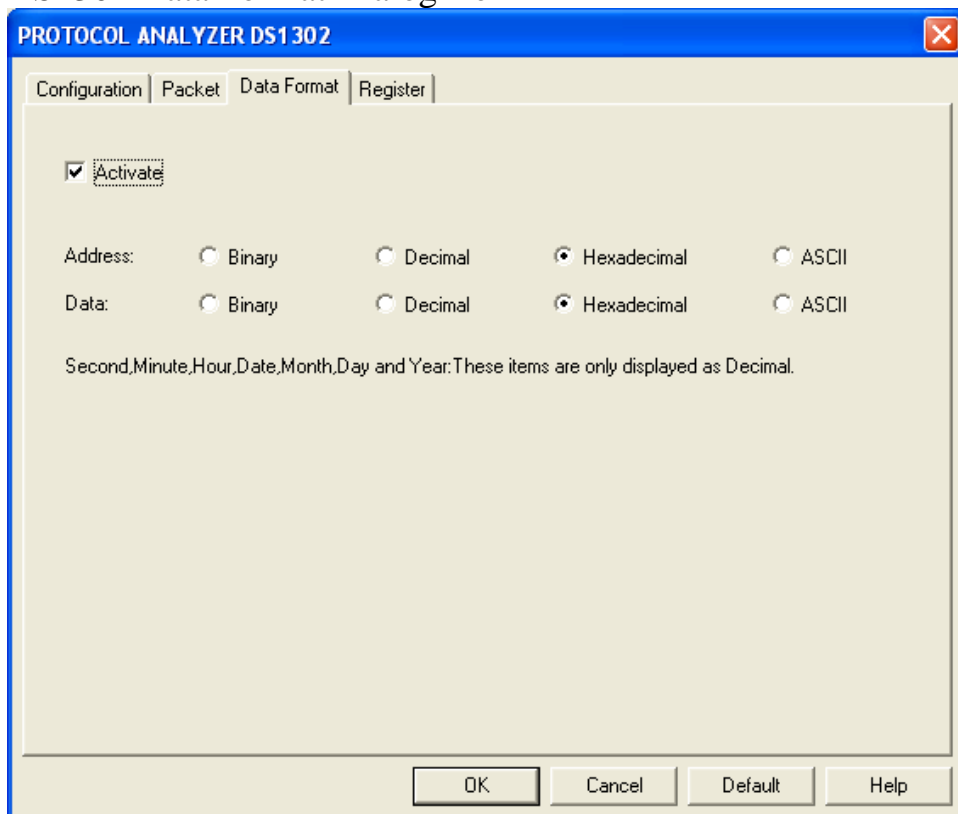


DS1302 Packet Dialog Box



In the Packet dialog box, users can set the item to be displayed and the color of items.

DS1302 Data Format Dialog Box

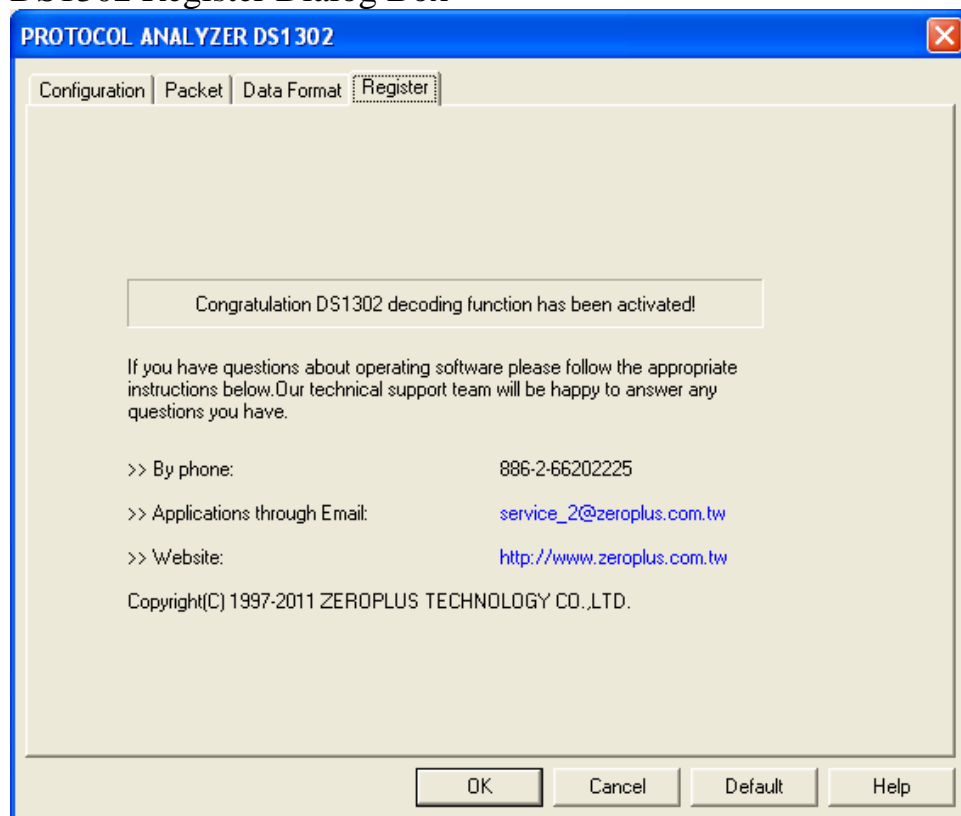


Users can set the Data Format of the Address and Data as their requirements. When selecting the option, Activate, the data format is decided by the settings in the Protocol Analyzer; when not selecting the option,



Activate, the data format is decided by the settings in the main program. But for the packets (Second, Minute, Hour, Date, Month, Day and Year), there are only displayed as Decimal that can't be changed by the change of the Data Format.

DS1302 Register Dialog Box

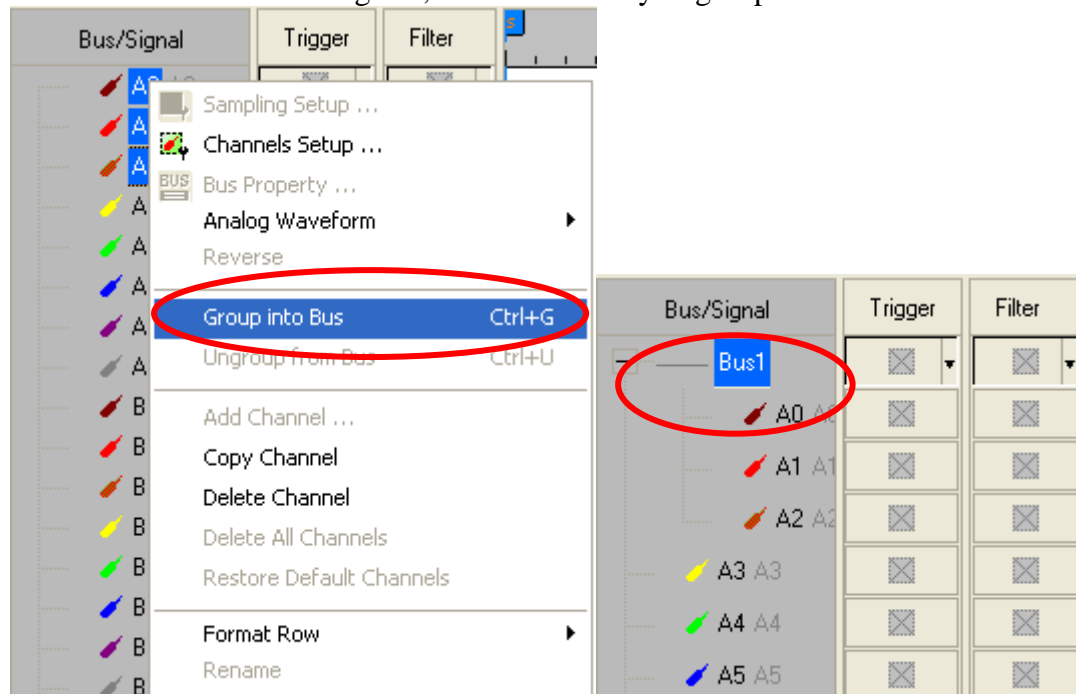


There is ZeroPlus company information. If you have any questions about software operations, you can contact ZeroPlus by Telephone or Email.

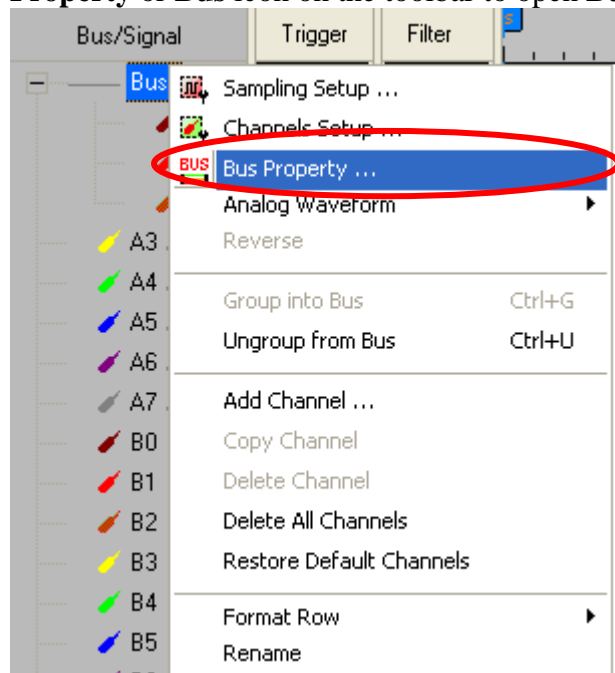


3 Operating Instructions

STEP 1. Group the A0~A2 channels into **Bus1** by pressing the **Right Key** on the mouse. **DS1302** needs three channels to decode signals, so it is necessary to group three channels into a Bus at least.

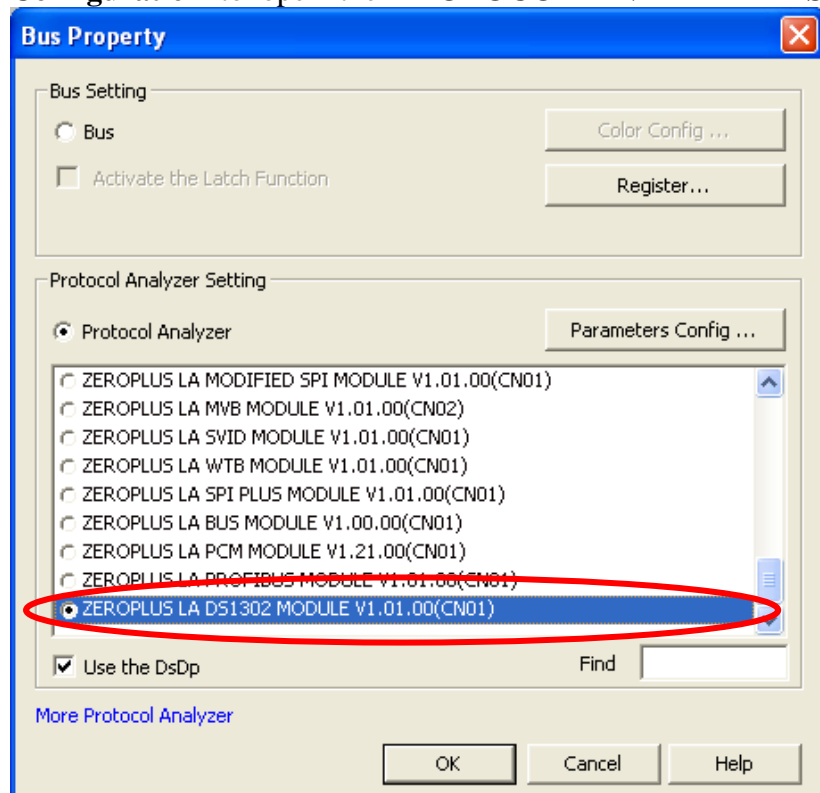


STEP 2. Select **Bus1**, and press **Right Key** on the mouse to list the menu, then press **Bus Property** or **Bus** icon on the toolbar to open **Bus Property** dialog box.

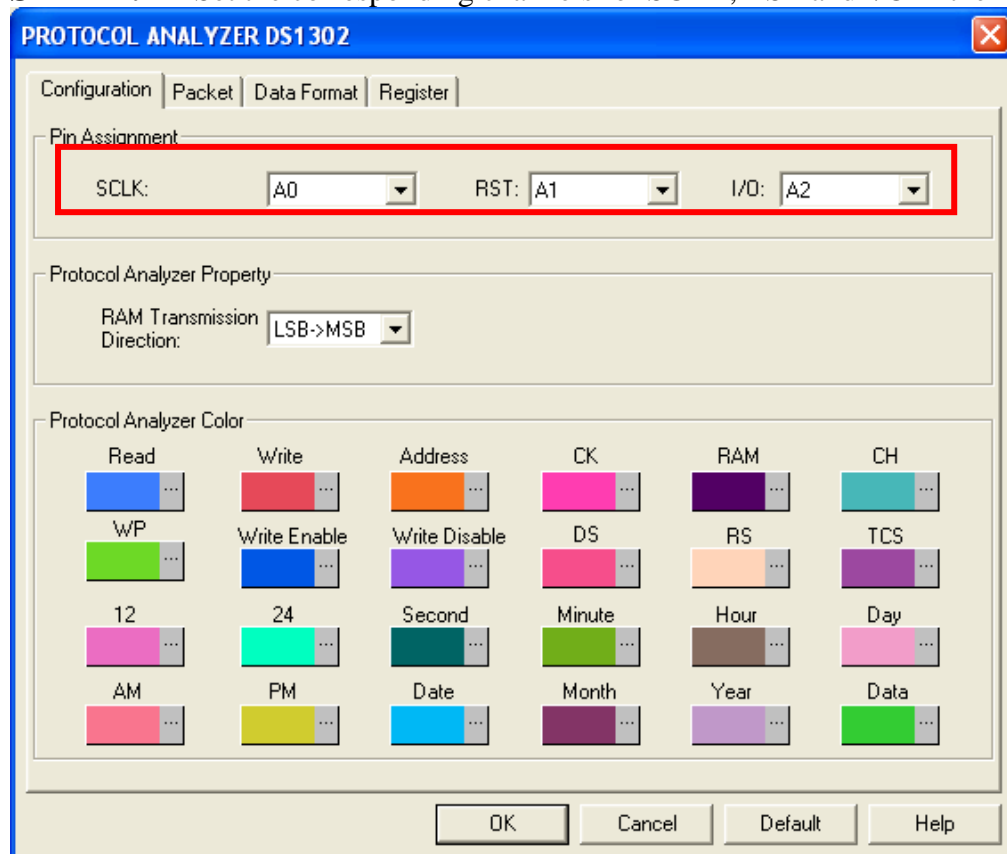




STEP 3. For Protocol Analyzer DS1302 Parameters Configuration, select Protocol Analyzer, and then choose **ZEROPLUS LA DS1302 MODULE V1.01.00(CN01)**. Next click **Parameters Configuration** to open the **PROTOCOL ANALYZER DS1302** dialog box.

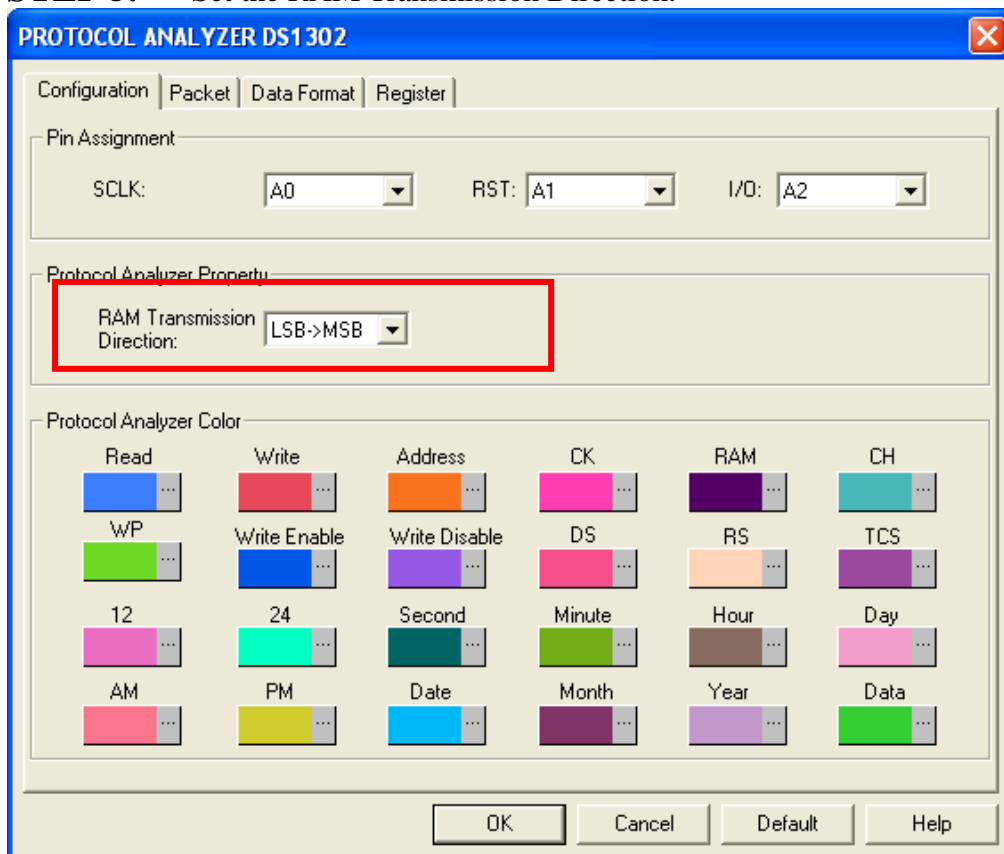


STEP 4. Set the corresponding channels for SCLK, RST and I/O in the Pin Assignment.

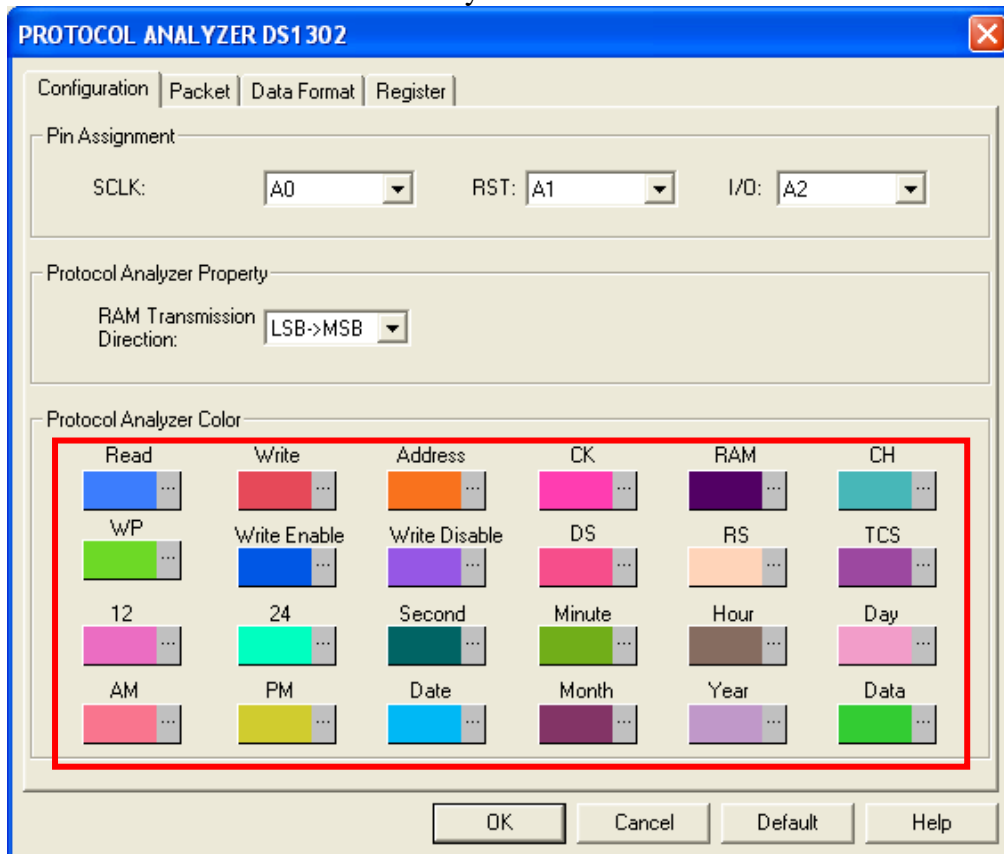




STEP 5. Set the RAM Transmission Direction.



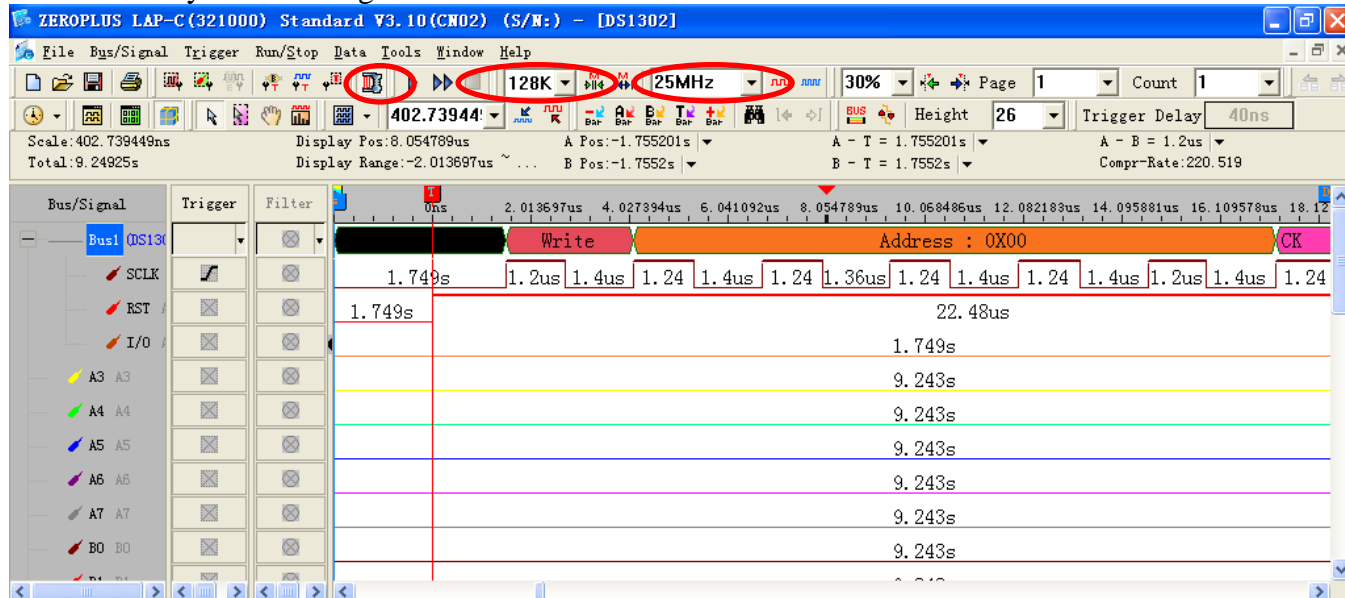
STEP 6. Set the Protocol Analyzer Color.





STEP 7. Following pictures show the completion of the protocol analyzer decoding and packet list, and the Compression Mode is activated. The memory depth is 128K; the sampling frequency is 25MHz (the sampling frequency should be more than eight times higher than the signal to be tested).

Protocol Analyzer Decoding



Packet List

